

BOROTUFF

A BRAND OF LEOMET ALLOYS

(Composite Wear Plate)

BOROTUFF composite wear plates gives, weld deposits of high C-Cr alloyed weld metal added Boron and other micro alloys which has excellent resistance to moderate impact, erosion and abrasion. It gives an extremely wear resistant qualities with standing intermediate strength of erosion & abrasion followed by moderate impact.

Applications

- Fan blades & Casings
- Guide Vanes & Louver ring
- Classifier Blades
- Mill Liners
- Nozzle ring assembly

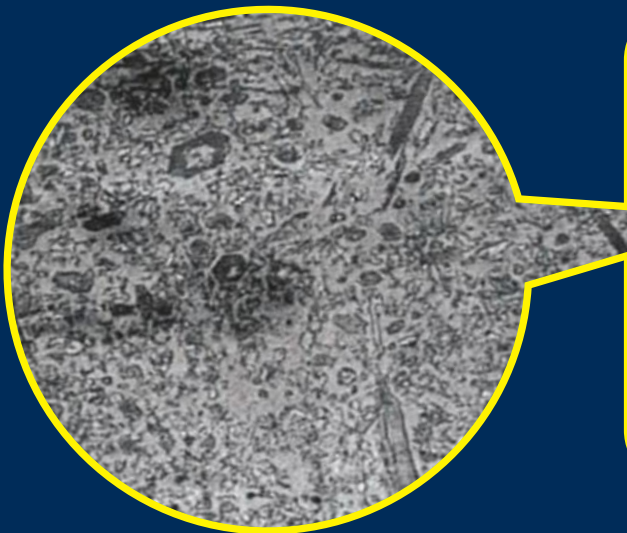
Hardness

Overlay Thickness	Hardness in RC
4.0 mm	57-61 RC
8.0 mm	58-62 RC

Major alloying elements

C	Si	Mn	Cr	B	Fe
3.5 - 6.0	0.5 - 1.00	0.5 - 2.00	22 - 28	0.5 - 1.50	Bal

Typical image analysis report



Remarks: Micro-structure shows the Primary Chromium Carbides & Eutectic Carbides with Austenite & Martensite

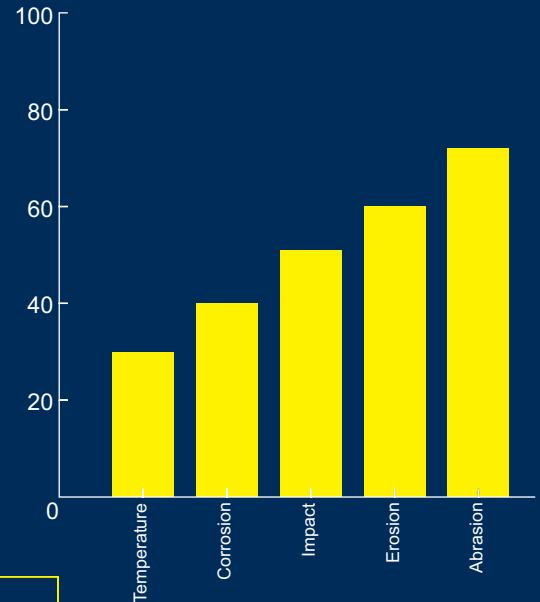
Carbide	%
Primary Carbides (Chromium Carbides)	35-40
Eutectic Carbide	20-28
Martensite	14-20
Austenite	12-16

Available in 3+3, 6+4, 8+4, 8+5, 10+5, 16+4, 10+10, thickness and so on.

Standard Size: 1300 x 3000 mm, 1420 x 3000 mm

BOROTUFF WEAR PLATES ARE MANUFACTURED WITH GERMAN TECHNOLOGY AND IS A BRAND OF LEOMET ALLOYS.

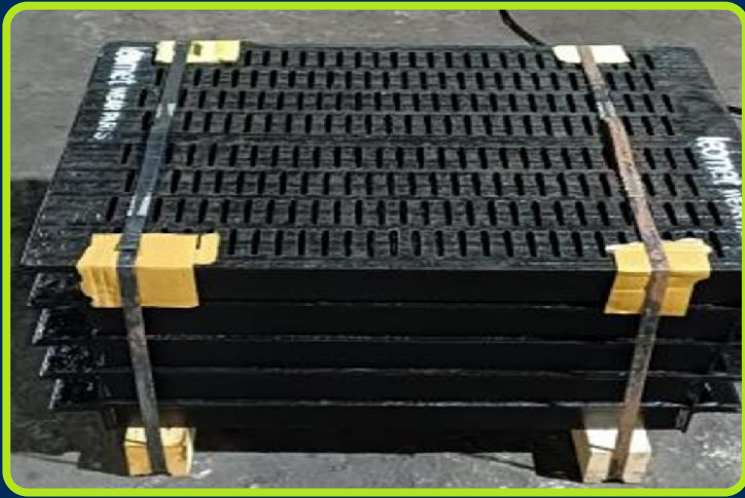
Wear Resistance Comparison



BOROTUFF

A BRAND OF LEOMET ALLOYS

(Composite Wear Plate)



Mr. DEEPAK MEHTA

 +91 9820668995

 d.mehta@leometalloys.com